



Friday 16th October 2020

Week commencing Monday 19th October 2020: [Week 2 Timetable](#)

[School Website](#) [Extra-Curricular Clubs](#) [Term Dates](#) [General School Notices](#) [Menus](#)

Dear Parents/Carers,

Welcome to the last bulletin of this half term.

Firstly, we would like to thank all the parents and students for their support this week with the announcement of our first positive Covid case in a Year 8 child at the Cherbourg campus. Whilst it was something we dreaded, it was a good test for the systems that we had established should such an event arise. Whilst we had to notify 96 students they would need to isolate, online live lessons commenced the Monday morning, so no learning was lost, coupled with Free School Meal boxes being delivered to homes. In addition, our collaboration with DfE and PHE meant that parents were informed quickly and guidance issued.

This case also acts as a very timely reminder, that whilst things in school now feel a new "normal" it is essential that students and staff follow the guidance, particularly around social distancing. We were delighted to hold year assemblies this week in person and remind children of the guidance, particularly around keeping a distance from each other and not sharing food, for example. Please impress upon your children the need to follow the guidance.

We are delighted to announce the Deputy Head Girls and Boys have been decided. At Cherbourg: Jody Silvanus and Michael Knowlton, whilst at Shakespeare: Sheila Agyei-Afari and Jamie Hegarty. We would like to congratulate all the other students who applied, it was a close fought contest.

Uniform:

Can we ask you as parents to ensure your children adhere to the rules surrounding jewellery and nails? A watch and pair of stud earrings is the only jewellery permitted, false acrylic nails are not permitted in school. There should be no facial piercings or retainers and plasters cannot be used to cover piercings. Any child not able to comply will be sent home until they are removed. Can we also remind parents that students need to have a face mask with them every day and that it should be washed or replaced daily. We have had a lot of students today who did not have a mask as it was in their blazer pocket. This would suggest masks are not being renewed daily. We do not have a continuous supply of masks in school so please make sure your child has their own clean mask each day.

Parent Parking:

Could parents please be respectful when parking their cars in residential areas to drop off and/or pick up their children from school. We recently had a complaint from a member of public living near the Cherbourg Campus who said that they were given verbal abuse by a parent parking in their road. We understand it is difficult with there being no parking for parents on either campus, but please think about where you park and be respectful to the community around us. Thank you.

Advance Notice:

We are looking at how we can reinstate after school clubs after half term. Please watch this space for more information. However, something that will be returning, by popular demand, will be our amazing Bake Club. This will return on Wednesday 14th October but it will be virtual. So any budding chefs out there, do you want to cook along at home? Do you want everything provided for you? If you bring in £1 all the ingredients will be in a bag ready for you. You don't even need to weigh or measure it out. Then log on and watch our amazing Mrs Davey cook up a storm in the kitchen!

We have also been gathering the views of Year 11, and we are looking to reinstate normal enhancement after half term. We will publish a timetable in the coming week.

Inset Days:

Please do not forget that Friday 23rd October and Monday 2nd November are staff training days. This means that this half term ends Thursday 22nd October and students return Tuesday 3rd November. Happy holiday!

More about all the activities occurring in and out of lessons at Crestwood can be found on our [Facebook page](#), [Twitter Feed](#), [Instagram Account](#) and [YouTube Channel](#). Reshares and likes are always appreciated.

Further dates for your diary include:

- Friday 23rd October - INSET DAY
- Monday 26th-Friday 30th October - Half-Term Break
- Monday 2nd November - INSET DAY

Wishing you all a peaceful and restful weekend.

Krista Dawkins
Head Teacher

krista.dawkins@crestwood.hants.sch.uk

Tim Nash
Head of School - Cherbourg

tim.nash@crestwood.hants.sch.uk

Steve Gibbs
Head of School - Shakespeare

steve.gibbs@crestwood.hants.sch.uk

COVID SECURE SCHOOL

School Day and Timings

Year 7, 8 & 9		Years 10 & 11	
Gates open	08.10	Gates open	08.10
Tutor 1	08.30-08.35	Tutor 1	08.30-08.35
Period 1	08.35-09.50	Period 1	08.35-09.50
Period 2	09.50-11.05	Period 2	09.50-11.05
Break	11.05-11.20	Tutor 2	11.05-11.30
Tutor 2	11.20-11.45	Break (Lunch)	11.30-12.05
Period 3	11.45-13.00	Period 3	12.05-13.20
Break (Lunch)	13.00-13.35	Period 4	13.20-14.35
Period 4	13.35-14.50	Home (in lieu of break)	14.35
		Enhancement	15.30-16.30

Key Stage 3 will operate the normal timings of the school day.

Key stage 4 will have no afternoon break and leave school at 2.35pm.

There are designated entrances and exits for each Key Stage to avoid gathering.

Before School: Gates will unlock at 8.10am. Students should arrive between 8.20am and 8.30am and not before to avoid any gatherings. Students should go directly to their tutor base. We understand that this is not always easy but we ask for your consideration in this matter. If any child comes on to the school site before this they must make their way straight to the Tutor base and wait outside the entrance until their teachers arrive.

Tutor time: This is reduced to 5 minutes in the morning, therefore punctuality is essential. The Personal Development programme will be delivered during the school day in a longer tutor time.

Entrances:

Cherbourg Year 7 Main gate
Years 8/9 Cherbourg Road gate
Years 10/11 Chestnut Road gate

Shakespeare Years 7/8/9 Bike Shed/Bridge gate
Years 10/11 Church/Shops gate

After School:

- Can we kindly request that parents do not gather in large groups outside the gates.
- Students need to move on quickly and in groups of no more than 6

Exits:

Cherbourg Year 7/8/9 Cherbourg Road student gate or Chestnut Avenue gate
Years 10/11 Chestnut Road gate or Cherbourg Road student Gate

Shakespeare Years 7/8/9 Church gate
Years 10/11 Church gate

Canteen/ Food: We would like to encourage students to bring a packed lunch to school to avoid congestion, however, please do have a school lunch if you are free school meals as it is your entitlement. There is hot food available as well as sandwiches and boxed salads. Menus can be found on our website under parents , cashless catering. All food is served with disposable cutlery and boxes/ tubs wherever possible, the menu has been adapted to allow this to happen.

There are free fruit and cereal bars available each morning registration. We encourage students, especially in Key Stage 3 to take an item for their break as their lunch is much later. Parents could also provide a healthy snack if they wish.

Parents need to top up their child's Scopay account online for lunches, over spends will no longer be permitted. From 14th September we will be returning to using fingerprints, with antibacterial wipes being used for each child. Year 7 should have had their fingerprints taken on 10th September.

Cleaning: We have taken on a new cleaning contractor NViro. We will have two janitors on each campus during the day, to enhance the robust cleaning already being conducted by the site team. There will be no after school clubs or meetings to ensure that the site is clear for thorough cleaning every evening.

Equipment:

Students will need to provide their own equipment as we are unable to loan pens and pencils. We also cannot allow students to use school aprons for classroom experiments and activities as they would need washing after every use, which is impractical. [Aprons](#) can be purchased from Skoolkit for £3.99 each

Each student should bring the following equipment:

- Pencil Case
- 2 Pens
- 2 pencils
- Pencil crayons
- Pencil Sharpener
- Eraser
- Ruler

All students **must** bring the following:

- Water Bottle, clearly marked with the child's name, currently many do not have this and are becoming very thirsty during the day.
- Apron for Science and Technology, clearly marked with the child's name
- Additional Apron for Food if studied, clearly marked with the child's name

Face Masks: It is essential that all children have a facemask upon them, it must be cleaned daily or replaced daily if disposable. Masks must be placed in a clear plastic bag in between use.

It is our priority to keep the school safe and operational and we believe this measure will help us do just that. We make this decision in the belief that wearing face coverings will enhance the preventative measures we already have in place in terms of the carrying and the transmitting of Covid-19. We are committed to caring for the whole community and this includes the school.

Exceptions to wearing face coverings **indoors** include;

- Face coverings may be removed once students are seated in their classrooms where other measures are present, such as good ventilation and regular cleaning. Teachers may ask students to put face coverings back on in lessons, for instance where students are asked to move or partially face each other in pairs or small groups.
- When students are eating a meal.
- Health conditions should not normally prevent a person wearing a face covering. Exceptions should be agreed with the school matron Anji Hinton who will issue an exemption pass.

Students do not need to wear their masks outside.

Students will be made to wear face masks in classes for the following staff, as these staff are clinically vulnerable and need protection:

- Mrs Howat, Food, Cherbourg
- Mr. Downs, Music, Shakespeare
- Mrs Lehrle-Fry, Science, Shakespeare

It is the responsibility of students and staff to provide their own face masks. The school will have a small contingency of masks in case of emergency such as forgetting it or soiling. You must not touch the front of the mask when removing it. Masks can be any pattern or colour, just please ensure they do not cause offence or scare anyone.

Face masks must be replaced regularly if disposable or washed if they are reusable.

All students and staff must carry a resealable plastic bag to place their face mask in when not being used.

Financial matters: Any payments to lunch accounts or for other services, such as trips, should be made online. If this cannot be done then any money should be placed in an envelope with the child's name, tutor group and reason for payment on the front. These should be placed on the deposit boxes. These items will only be opened on a Monday to ensure that 48 hours have passed before touching by others.

If you do not have a login for your child's account or have lost the details please contact karen.gibson@crestwood.hants.sch.uk

Hand Sanitiser: These are situated in every classroom on entrances and exits, all offices and in corridors.

Hand Washing: The cleaners and site team are noticing during their routine cleans throughout the day that many of the sinks seem untouched. It is **essential that students still wash their hands in addition to hand sanitising!**

Hands, face, space: It is essential that we all follow the government guidance in order to keep us safe. We are requesting that students do not touch each other, share food and maintain a distance where possible.

Bubbles: We have divided our students into year group bubbles for lessons. As we are a split site campus our year groups on each site are much smaller than most secondary schools. Each bubble will be no more than 150 children, smaller at Key Stage 4 at around 140.

Each year group is taught discreetly, this means that all of your child's lessons will be spent with their year group and in Years 7 within their tutor group.

At break times, lunchtimes and lesson changeovers there may be some passing contact with students in the other Key Stages and years but these are defined as lower risk. The [guidance](#) states:

“..... passing briefly in the corridor or playground is low risk, schools should avoid creating busy corridors, entrances and exits.”

On our sites, there will inevitably be areas where the bubbles do come into close proximity but we have tried to minimise these as much as possible. Our sites won't allow anything else we're afraid, for example, we don't have endless toilets and separate canteens, but areas will be subject to routine, enhanced and frequent cleaning.

Where we have had to isolate a bubble due to a positive case of Covid, remote learning will be provided. The guidance we follow is that of PHE and any communication to parents is formulated with them.

Movement around the school site: Each campus will have designated routes.

- At Shakespeare Key Stage 3 move around the inside of the Crescent area, whilst Key Stage 4 will move around the outside of the school.
- At the Cherbourg Campus there are corridors of movement in a one way direction. So as students leave each block they are not mixing with other students in transit.

Learning Support at social times: Learning Support will operate a very small supervised lunch support group for the most vulnerable students in bubbles. It will be an invite only and restricted to 10 students each lunch time. Lunch will be supervised by two members of staff. Cleaning will be completed after each lunch sitting.

Library and computer suites: Each library will be limited to 15 students per break and lunch. The library will be available to classes for lessons on booking. The computer suites will not be accessible to classes other than those timetabled within them. Portable ICT will be available.

Pastoral Support: Students will be asked to email a request for support and appointment times will be given. The rooms will be closed at breaks and lunch.

PE Changing Rooms: to minimise use we are asking students who have PE period 1 to arrive in their kit, likewise if they have PE period 4 they will leave site in their kit. We have ensured that each changing room will be sanitised between groups, there should be no mixing of year groups.

Posters: Posters with consistent guidance will be displayed across the school.

Main school office: These will be out of bounds to students and staff. Any requests to office staff must be made via email or telephone. Parents will not be allowed on site to visit.

Social Time: There are staggered breaks and lunchtimes.

Key Stage 3 has their break at 11.05am - 11.20am, lunch will be 1pm - 1.35pm.

Key Stage 4 has their lunch at 11.30am - 12.05pm, they have no scheduled break as they leave the site at 2.35pm

Indoor areas for lunch and break times have also been allocated in the event of wet weather. We are in the process of erecting marquees for shelter on the fields.

IMPORTANT NEWS AND SCHOOL INFORMATION

UNIFORM:

Can we please remind you that all students need to be in full uniform. Skirts/ trousers are grey in colour, tie, blazer, white shirt and solid black leather style shoes or trainers. We have noticed the return of stretchy, tube type, skirts. These are not permissible in school. We would ask parents to refer to our uniform policy on our [website](#). The only permissible jewellery is a pair

of stud earrings and a watch (Apple watches are not permitted). Masks should now be worn in communal indoor areas.

MEDICINES IN SCHOOL

Please can I remind parents and students, medicines, including paracetamol/ibuprofen, MUST be handed into reception/medical and not carried around school. Students may carry their own inhalers and epipens, but these are the only exceptions.

ENERGY DRINKS BAN

It has come to our attention that a minority of Year 7s are consuming energy drinks before school. They are being purchased on their way to school from the local newsagent. We have in the past spoken to our local establishments; the CoOp agreed with us and has refused to sell them, unfortunately the local newsagents refused to support the efforts. Please can you reiterate to your children the harm these drinks can cause and the long lasting effects it can have on them.

WATER BOTTLES

We encourage our students to stay hydrated during the school day and are therefore asking parents/guardians to ensure they send their child into school with a bottle of water everyday.

IMPORTANT NOTICE FROM MATRON

Please ensure you are contactable by telephone and that we have an up to date phone number for you.

If you or your child are displaying any symptoms of Covid 19 you must keep them at home and organise a test. They will need to isolate for 10 days and the rest of the household must isolate for 14 days. It is recommended that anyone displaying symptoms should be tested as soon as possible.

If you have a negative test result the whole family can go back to normal.

If your child displays any symptoms of Covid19 while in school we will isolate them and contact you to collect them immediately and arrange for an urgent test. Please let us have sight of your test result either positive or negative.

The symptoms are :

A new persistent cough

A high temperature

Loss of taste or smell

If you have any concerns please do not hesitate to contact me and I will do my best to help.

Remember: HANDS FACE SPACE to keep us all safe

PROUD CRESTWOOD MOMENT

We are so proud of Sam Terrey and Georgie Terrey and the charitable work they have accomplished. They have been busy recycling old mobile phones, small ink cartridges, tablets and iPads to raise money to support Young Carers in Eastleigh since February 2018 and have raised £1002.80p up to end of July 2020.

We spoke to both Sam and Georgie and they told us how it works:

“We ask permission to place a small collection box in a public place. At present the 10 places you will find collection boxes for these items are:

- Cherbourg Campus Crestwood College (Georgie's School)
- The Crescent School
- Eastleigh Library, in the Swan Centre
- Eastleigh Baptist Church, (in coffee shop) Wells Place
- One-Community Office 75 Leigh Road
- Shop Mobility, Wells Place
- Tesco Extra Hamble Lane Bursledon SO31-8GN
- Good Luck Chinese Takeaway in Twyford Road Eastleigh
- Crestwood Community School Shakespeare Campus Eastleigh (Sam's School)
- Tesco Superstore Whitley Fareham PO15-7LL

Collections from the boxes are made regularly, then the phones, tablets, iPads and small ink cartridges are sent off for recycling. The value is calculated by the 2 recycling companies and the money paid directly from the recycling companies into the Young Carers GROUP Bank Account at One Community. Please note that we always write to ask permission for a collection box to be placed."

Re-cycling with Sam & Georgie

We need YOUR support by Re-cycling
Old mobile phones & Used ink cartridges & iPads / Tablets
to help raise money for this great group of people
Every penny raised goes directly to the E.Y.C group bank account

Eastleigh
Young Carers



Up to date
you have raise
£1002.80p



Listed below are the 10 places you will find collection boxes for these items

- 1 - Cherbourg Campus, Crestwood College, (at reception)
- 2 - The Crescent School, (in the reception area)
- 3 - Eastleigh Library, in the Swan Centre,
- 4 - Eastleigh Baptist Church, (in coffee shop) Wells Place
- 5 - One-Community Office 75, Leigh Road in the Reception,
- 6 - Shop Mobility, Wells Place (next to McDonald's),
- 7 - Tesco Extra Hamble Lane Bursledon SO31-8GN at the customers information desk
- 8 - Good Luck Chinese Take Away in Twyford Road Eastleigh
- 9 - Shakespeare campus, Crestwood College, (at reception)
- 10 - Tesco Superstore Whitley Fareham PO15-7LL at the customers information desk



CAREERS NEWS - VIRTUAL CAREERS FAIR

Each year we hold a careers fair and invite colleges, universities and employers to come and talk to our students about the choices and pathways available to them after they leave Crestwood. This year we will not be able to do this so we have created this virtual careers festival. Just click on the link below and to go to the full map with links to websites and videos for a host of local opportunities!

<https://crestwood.hants.sch.uk/school-information/curriculum/careers/>

Zoom in and click on the symbols underneath each college or employer.

STUDENT SUPPORT NEWSLETTER

Thank you to everyone that took part in supporting #YoungMinds last Friday, we will announce the total of money raised next week. Please find attached this half terms student support newsletter. Please do contact staff at school if there are any concerns or in need of any pastoral assistance.

<https://crestwood.hants.sch.uk/.../Student-Support...>

DEPUTY HEAD BOY AND DEPUTY HEAD GIRL

We are delighted to announce the Deputy Head Girls and Boys have been decided.

Cherbourg: Jody Silvanus and Michael Knowlton - Photographs in the next Bulletin

Shakespeare: Sheila Agyei-Afari and Jamie Hegarty - Photographs in the next Bulletin

LINKS TO PROMOTIONAL PRESENTATIONS:

Please click on the links below to view our virtual presentations:

[Promotional Film 2020](#)

[Headteacher's Open Evening Presentation](#)

[Cherbourg Campus Virtual Open Evening Video](#)

[Shakespeare Campus Virtual Open Evening Video](#)



Department
for Education

Letter for parents about COVID-19 symptoms

Public Health England have produced a letter for schools to distribute to parents which explains when a person requires a coronavirus test and what the symptoms of coronavirus are. The Department would be grateful if you could share and circulate this letter amongst parents at your school.

The intention of the letter is to help prevent children being taken out of school unnecessarily and answer some of the questions parents may have around testing.

[You can view the letter here.](#)

**If your child has:
a runny nose, is sneezing or
feeling unwell
But they don't have:
a high temperature
a new, continuous cough, or
a loss of, or change in,
sense of smell or taste**

**These are
not normally symptoms of
coronavirus**

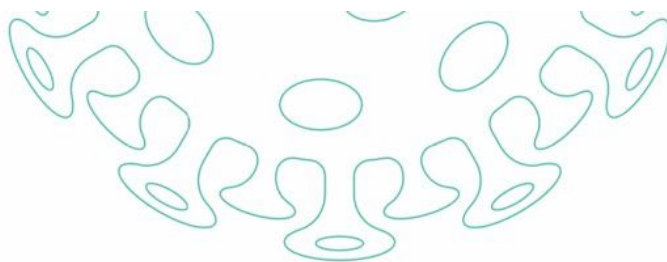
**Seek advice from a pharmacy, dial
111 or see your GP**



**If your child has:
a high temperature
a new, continuous cough, or
a loss of, or change in, sense of
smell or taste**

**This could be a sign of
coronavirus**

Book a test



Advice on the coronavirus for places of education

How serious is the coronavirus?

- it can cause flu-like symptoms, including fever, cough & difficulty breathing
- the infection is not serious for most people, including children
- there is currently no vaccine
- most people get better with enough rest, water to drink and medicine for pain

How likely are you to catch the virus?

- you can only catch it if you have been close to a person who has the virus
- the chance of being in contact with the virus is currently low in the UK
- if you have travelled to areas where many people are infected, your chance of catching the virus is higher, i.e. China and any affected areas

How can you stop coronaviruses spreading?

If you need to cough or sneeze



Catch it
with a tissue



Bin it



Kill it
by washing
your hands with
soap & water or
hand sanitiser

You should wash hands with soap & water or hand sanitiser



After breaks
& sport
activities



Before
cooking
& eating



SCHOOL
ETC.
On arrival at
any childcare
or educational
setting



After using
the toilet



Before
leaving
home



Try not to touch your
eyes, nose, and mouth
with unwashed hands



Do not share items that come
into contact with your mouth
such as cups & bottles



If unwell do not share
items such as bedding,
dishes, pencils & towels



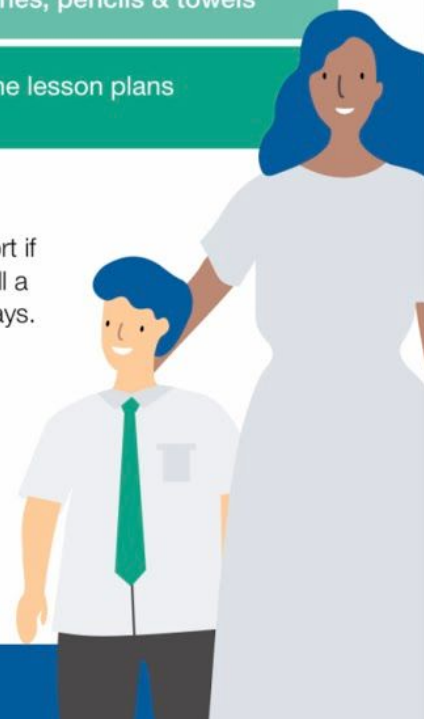
Stop germs spreading with our e-Bug resources on hand and respiratory hygiene lesson plans for KS1, 2 and 3: campaignresources.phe.gov.uk/schools

What should you do if you feel unwell?

Keep away from others and stay at home to stop the infection spreading. Avoid public transport if you think you have symptoms of coronavirus. If you become unwell at a place of education, tell a member of staff and let them know if you have travelled to any other countries in the last 14 days.

If your staff member or parent thinks you have symptoms of coronavirus, they should call **NHS 111** for advice. Follow the UK Government advice for childcare or educational settings gov.uk/government/publications/guidance-to-educational-settings-about-covid-19. Parents can visit NHS.UK to find out more information. Teachers and support staff should follow the UK Government advice.

Staff, students and pupils who have returned from Wuhan and Hubei Province in China should self isolate, and NOT attend education or work for 14 days. See NHS.UK for advice on coronavirus.



If there is an emergency, call 999 immediately